

LakeMaster MMC/SD Troubleshooting Guide

The LakeMaster MMC card will work with all Lowrance/Eagle units that accept an MMC/SD card.

The exceptions are the:

- LMS 240
- GlobalMap 2400

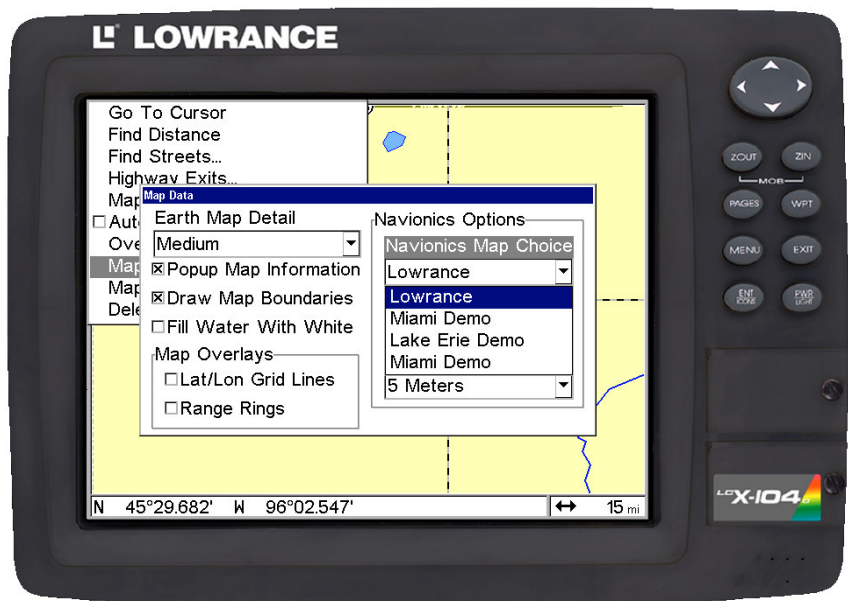
If you have purchased a LakeMaster MMC/SD card and it is not working in your Lowrance or Eagle GPS unit the first time you insert the card, please follow these instructions to quickly determine some common issues:

1. SET UNIT TO LOWRANCE Map Data Format

The LakeMaster MMC/SD card is an LEI product. The GPS data format must be set to Lowrance to display the LakeMaster Maps. Follow these instructions to check the data format.

- click the “menu” button once
- scroll down to “map data” and click enter
- scroll over to “Navionics Options” and click enter
- scroll down to “Lowrance” and click enter
- Exit twice

Now that you have the map data set to “Lowrance” check to see if the chip is working. Make sure that you are zoomed into the lake at a scale of 1 mile or less. Contour information will not show up at a scale of 15 miles or greater. As you continue to zoom in, more contours will show up.



2. INSTALL NEWEST LOWRANCE UPDATE

If the LakeMaster Chip is still not working, make sure you have downloaded and installed the newest update for your unit from Lowrance. You will need a blank MMC or SD card as well as an MMC/SD card reader. Before downloading the update, plug in the card reader and insert the blank card.

To Download the update:

- go to <http://www.lowrance.com/Software/Upgrades/upgrades.asp>
- Find your Lowrance model and click on it
- At the top of the next page click on “Click here to Install now”

- A Java applet will load and a window will pop up with the options to “Run” or “Cancel”. Click Run (If the window does not pop up click on the “PC Win98/ME/2000/XP/2003” link, then click “run”) It will take a few seconds depending on your internet connection to download the file.

- A window may pop up asking you to “Run” or “Cancel” again, click “Run”.

- An Installshield Wizard will pop up, click next.

- The next window will ask you to select the Drive letter representing your card reader. If you know the drive letter of your card reader, select the correct drive letter and click next.

- The next window will pop up with an option to check Yes or No. Always check “Yes” for this window and click next.

- In the next window it will ask you if you want the files deleted from the card after the Lowrance unit has been updated. You can choose either “Yes” or “No”. If you choose No you can always delete the files later. Select “Yes”.

- The next window provides summary information. Review that you have the correct Lowrance model at the top and check that the drive letter is correct. When you are ready, click the Install button.

- After a few seconds the file will be written to the card and a window should pop up saying that the update was successfully installed
- Remove the card from the card reader. Making sure the power is off, insert the card into your Lowrance Unit. Turn the unit on. The Lowrance unit will automatically install the update. At this time you should see a progress bar moving across your Lowrance unit's screen. After the progress bar disappears the unit has been updated.
- For final verification that the correct version was successfully updated:
 1. Press the menu button twice
 2. Scroll down to System Setup and press enter
 3. Scroll down to Software Information and press enter
 4. A window will pop up showing the version. Verify that the version number corresponds to the version number that was downloaded.

